



# How To Move a Walk-In Environmental Test Chamber Without Risking Performance

---

15 Wellman Ave North Chelmsford, MA  
978-772-0022  
[service@associatedenvironmentalsystems.com](mailto:service@associatedenvironmentalsystems.com)  
[www.associatedenvironmentalsystems.com](http://www.associatedenvironmentalsystems.com)

# Table of Contents

Introduction	03
Step 1: Plan the Move Before Powering Down	04
Step 2: Power Down and Protect Critical Components	05
Step 3: Disassemble the Room Properly	06
Step 4: Transport with System Integrity in Mind	07
Step 5: Reinstall, Level and Seal the Room	08
Step 6: Calibrate and Validate Performance	09
Conclusion	10

# Introduction

Walk-in environmental test chambers, commonly referred to as walk-in rooms, are precision engineered systems designed to deliver controlled and repeatable environmental conditions. Moving a walk-in room is not a simple facilities task. These systems rely on tightly integrated refrigeration, structural, airflow, and control components to maintain performance. Improper relocation can introduce air leaks, temperature non uniformity, calibration drift, and costly downtime.

Relocating a walk-in room requires careful planning, controlled disassembly, secure transport, precise reinstallation, and performance validation. When handled incorrectly, relocation can compromise chamber reliability and result in immediate maintenance requirements or long term performance degradation.

At Associated Environmental Systems, we work with customers at every stage of this process. Whether supporting internal teams or managing the full relocation, proper handling ensures the walk-in room continues delivering accurate, repeatable, and reliable test conditions.

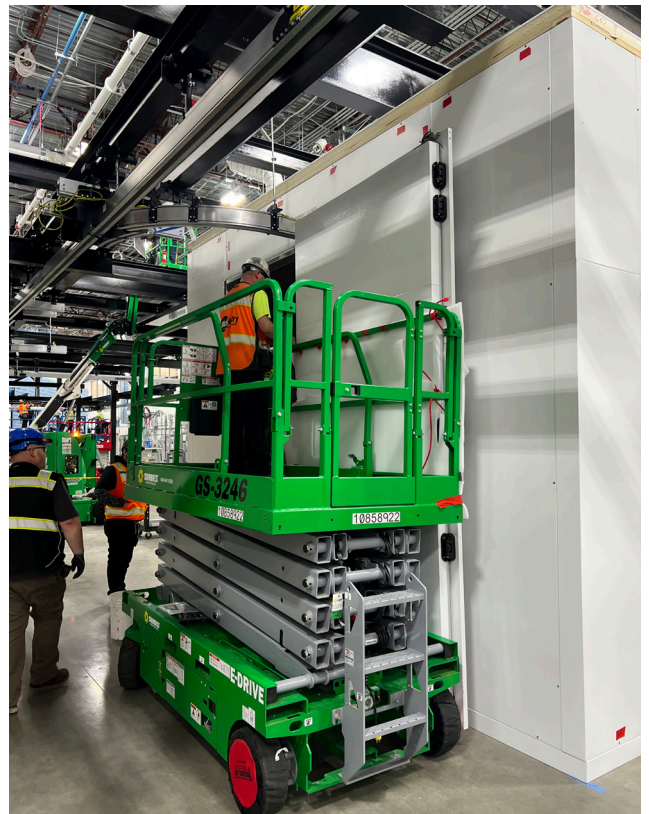
The following technical considerations outline how to safely relocate a walk-in environmental test room while protecting system integrity and performance.

# Step 1: Plan the Move Before Powering Down

A walk-in environmental test room is a fully integrated system, not simply a collection of panels. Before disconnecting anything, evaluate the existing installation and confirm the new location can properly support the chamber. Key planning considerations include:

- Existing room configuration, panel layout, and system orientation
- Refrigeration system design, including piping routes and component locations
- Utility requirements at the new site, including electrical supply, water, drainage, and ventilation
- Floor load capacity and installation surface levelness
- Clearances required to safely remove and reinstall panels and mechanical components
- Rigging, lifting, and transport equipment required for relocation

Many relocation issues originate during the planning phase. Even small differences in installation conditions can affect system performance, installation time, and long-term reliability.



# Step 2: Power Down and Protect Critical System Components

Walk-in rooms contain sensitive refrigeration, electrical, and control systems that must be properly shut down and secured prior to disassembly. Improper shutdown or handling can result in mechanical stress, component damage, or performance instability after restart.

Before disassembly:

- Follow manufacturer recommended shutdown procedures for compressors and control systems
- Secure refrigeration piping, sensors, and electrical connections
- Label wiring and mechanical connections to ensure accurate reinstallation
- Stabilize compressors and refrigeration assemblies prior to transport

Refrigeration systems are especially sensitive to vibration and improper handling. Transport-related vibration can stress refrigeration lines, weaken joints, or introduce leaks. These issues may not be immediately visible but can result in reduced cooling performance and require maintenance before the chamber can return to full operation.



# Step 3: Disassemble the Room Properly

Walk-in environmental test rooms are modular, but proper disassembly is critical to preserving structural and thermal integrity.

Disassembly should include:

- Removing panels in the correct sequence
- Labeling panels and components for proper reassembly
- Protecting cam-locks, gaskets, and insulation materials
- Carefully removing doors, sensors, and control components
- Inspecting sealing surfaces, insulation, and panel joints

Improper disassembly can compromise the chamber vapor barrier and insulation performance. Even minor damage to seals or insulation can introduce air infiltration, resulting in temperature instability, condensation, and increased system workload.

## Use Relocation as a Preventive Maintenance Opportunity

While panels and components are exposed, this is the ideal time to inspect and service parts that are otherwise difficult to access. Performing preventive maintenance during relocation is optional but strongly recommended, as it can prevent unexpected downtime and improve long-term reliability.

Recommended maintenance actions include:

Inspecting silicone seals and gaskets for hardening, cracking, or degradation

- Replacing worn seals to restore proper environmental containment
- Inspecting refrigeration piping and joints for stress or wear
- Verifying electrical connections and control wiring integrity
- Evaluating and calibrating sensors as needed
- Inspecting insulation and structural sealing surface.

Taking advantage of this opportunity ensures that the walk-in room continues to deliver accurate, repeatable performance and may extend its operational lifespan.

# Step 4: Transport with Integrity in Mind

Transporting a walk-in environmental test room requires careful handling to protect structural, refrigeration, and control systems. Best practices include:

- Securing panels to prevent movement and structural damage
- Protecting sealing surfaces and insulation materials
- Stabilizing refrigeration systems during transport
- Protecting sensors and control systems from physical shock
- Minimizing vibration and mechanical stress during transport

Transport vibration is one of the most common sources of hidden system damage. Improper handling can affect refrigeration performance, electrical connections, and sensor reliability, potentially requiring maintenance before the chamber can return to service.

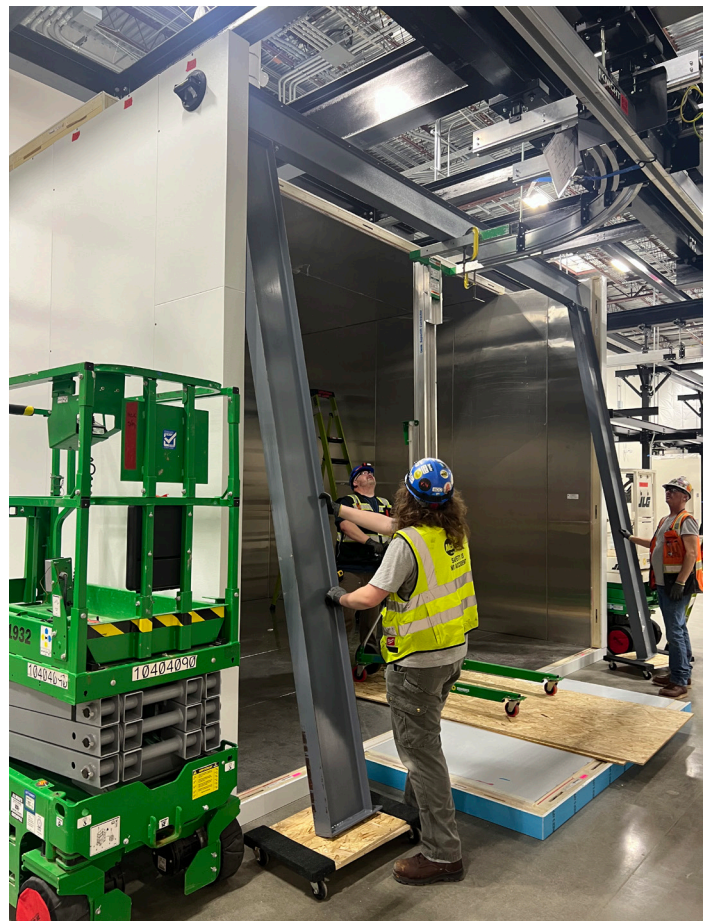
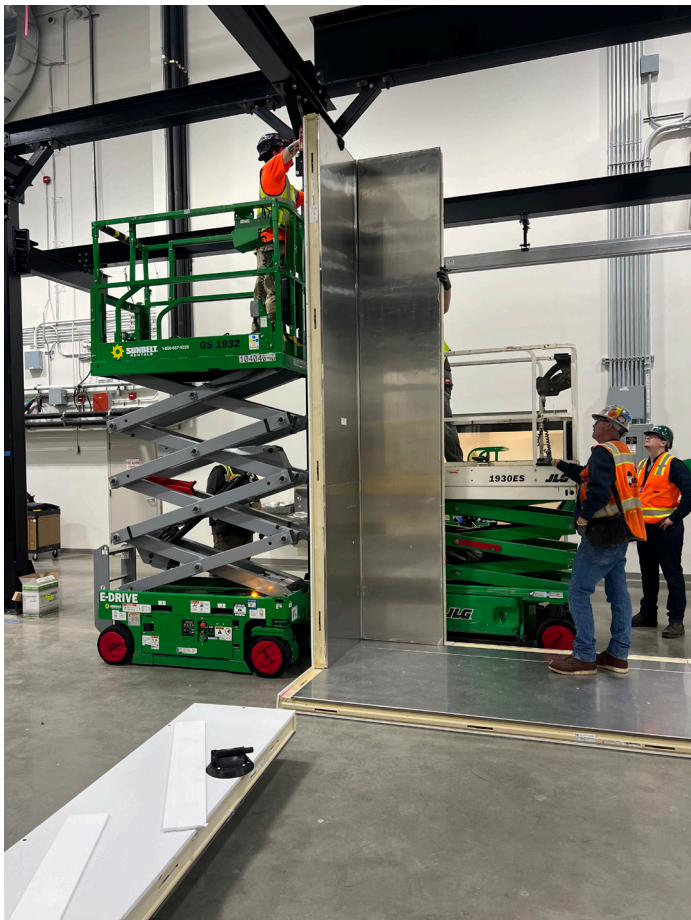
# Step 5: Reinstall, Level and Seal the Room Properly

Proper reinstallation is essential to restoring chamber performance. Walk-in rooms rely on precise structural alignment and sealing to maintain environmental stability.

Reinstallation should include:

- Ensuring panels are square, level, and properly aligned
- Verifying cam-lock engagement and structural integrity
- Restoring or replacing seals to maintain vapor barrier integrity
- Aligning doors to ensure proper sealing
- Reconnecting refrigeration, electrical, and control systems according to manufacturer specifications

Improper alignment or sealing can lead to temperature variation, increased energy consumption, and reduced system performance.



# Step 6: Validate Performance and Ensure Reliable Operation

Calibration and performance validation are essential before returning the walk-in environmental test room to operational use. Relocation can affect sensor accuracy, airflow patterns, refrigeration performance, and overall system stability. Even when the system appears to be properly reinstalled, performance must be verified to ensure reliable and repeatable environmental conditions.

Performance validation should include:

- Calibration of temperature and humidity control systems
- Verification of sensor accuracy across the operating range
- Chamber mapping to confirm temperature uniformity and stability
- Inspection of refrigeration system operation
- Confirmation of proper airflow and system response

Without proper validation, performance issues may remain undetected and affect test reliability, product qualification, and long-term system operation.

Because walk-in environmental test rooms are precision systems, manufacturer involvement during relocation and startup helps ensure performance is fully restored. Manufacturer led relocation and validation ensures refrigeration systems, structural assemblies, and control systems are properly inspected, serviced, and verified according to original design specifications.

Associated Environmental Systems supports customers throughout relocation and startup, including:

- System disassembly and reinstallation
- Refrigeration and electrical system inspection
- Preventive maintenance and seal replacement
- Calibration and chamber mapping
- Startup support and performance verification

This support helps reduce risk, prevent unexpected maintenance, and ensure the walk-in room continues delivering accurate, repeatable environmental testing conditions.

# Conclusion

Moving a walk-in environmental test room is a technical process that directly affects system performance, reliability, and accuracy. Proper planning, controlled disassembly, secure transport, preventive maintenance, and performance validation are essential to ensuring continued operation.

When relocation is handled correctly and performance is fully validated, the walk-in room can be restored to full operational condition and continue delivering reliable environmental testing for years to come.



15 WELLMAN AVE NORTH CHELMSFORD, MA  
978-772-0022  
SERVICE@ASSOCIATEDENVIRONMENTALSYSTEMS.COM  
WWW.ASSOCIATEDENVIRONMENTALSYSTEMS.COM  
SALES - SERVICE - PARTS